

MOTORCYCLE TIRES

Application charts



KEEP ON RIDING

mitas-moto.com     @mitasmoto

Mitas

ON-ROAD

RACING


SPORT FORCE+RS


SPORT FORCE+EV


SPORT FORCE+


MC-50


TOURING FORCE-SP


TOURING FORCE


CUSTOM FORCE

2025

STREET


STREET FORCE


MC-32


MC-25 BOGART


MC-9


MC-7

CLASSIC


H-06


H-04


H-03


H-02



ADVENTURE

ADVENTURE



TOURING FORCE



TERRA FORCE-R



ENDURO TRAIL-SP



ENDURO TRAIL-ADV 2



ENDURO TRAIL-ADV



MC 24 INVADER



ENDURO TRAIL+

ADVENTURE



ENDURO TRAIL



MC 23 ROCKRIDER



ENDURO TRAIL-XT



ENDURO TRAIL-XT+

RALLY



ENDURO TRAIL-RALLY

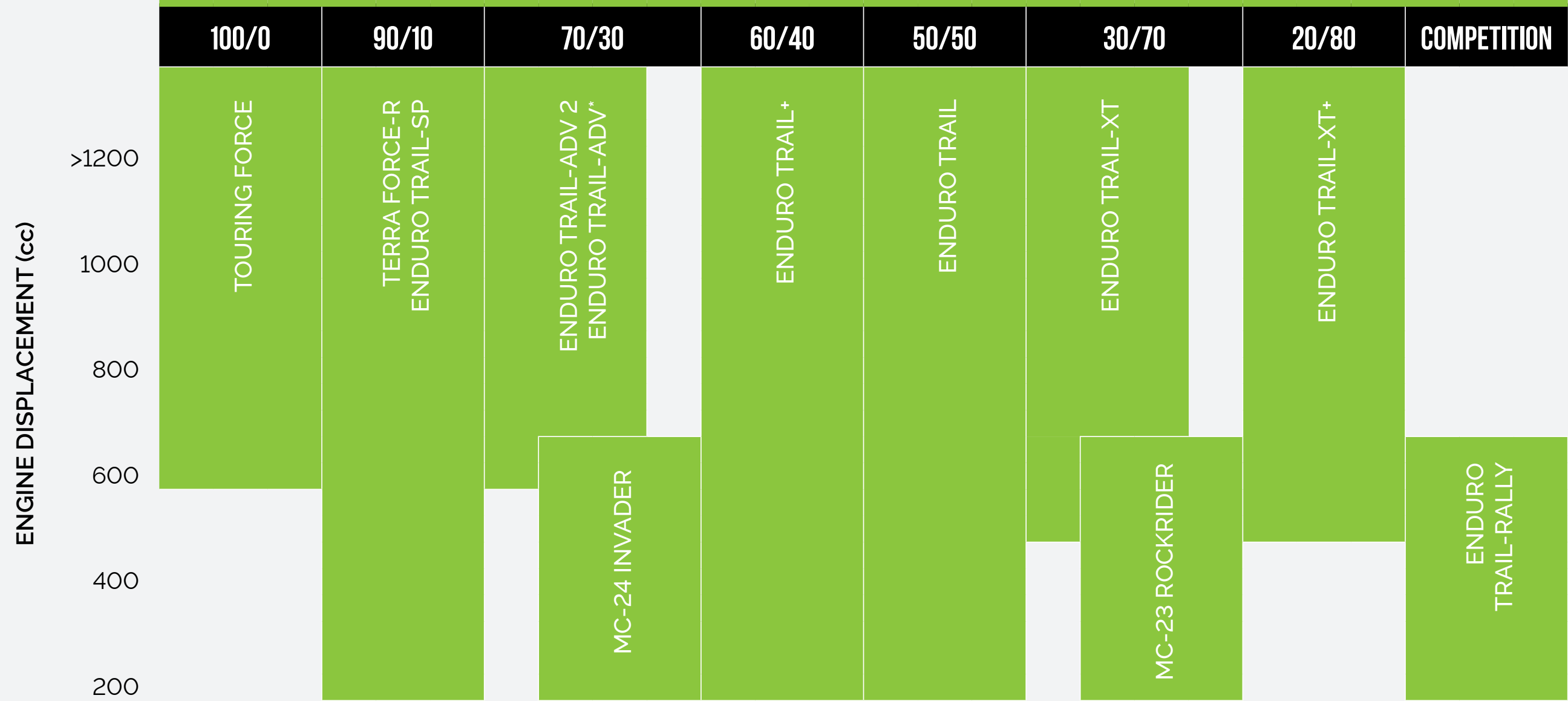
ADVENTURE CLASSIC



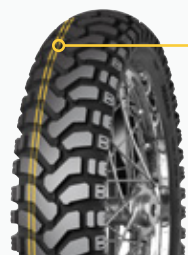
E-05



E-06



* Mitas ENDURO TRAIL-ADV is not distributed in the following countries: France, UK, Italy, Germany, USA, China, Thailand and Indonesia.



DAKAR

Tire with a stronger carcass and higher puncture resistance. Suitable for higher loads, longer adventure trips and extreme conditions.

ENDURO (TERRA FORCE-EF RANGE)

ENDURO






TERRA FORCE-EF

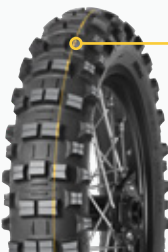


TERRA FORCE-EF PRO



TERRA FORCE-EF 2 SM

TREAD PATTERN	VERSION	STRIPE COLOR	WET ROCKS	GRASS	SAND	CLAY AND MUD	MID-SOFT	LOOSE OVER HARD	STONES / GRAVEL / ROCKS	HARD
										
FRONT										
TERRA FORCE-EF	PRAKTIKA									
TERRA FORCE-EF	SUPER	■								
TERRA FORCE-EF 2 SM	SUPER	■								
TERRA FORCE-EF 2 SM	SUPER LIGHT	■								
TERRA FORCE-EF	SUPER LIGHT	■								
REAR										
TERRA FORCE-EF	PRAKTIKA									
TERRA FORCE-EF	SUPER	■								
TERRA FORCE-EF	SUPER FAST	■								
TERRA FORCE-EF	SUPER LIGHT	■								
TERRA FORCE-EF	ULTRA LIGHT	■								
TERRA FORCE-EF	SUPER SOFT	■ ■								
TERRA FORCE-EF PRO	SUPER SOFT	■ ■								



SUPER

Identified by the characteristic yellow stripe: medium carcass construction and compound, especially designed for high speed Enduro, ideal in hard dry conditions.

FAST ENDURO



SUPER SOFT

Identified by the characteristic double green stripe: light carcass construction with ultra gummy compound, especially designed for low speed extreme Enduro, ideal in wet slippery conditions.

XTREME ENDURO



SUPER LIGHT

Identified by the characteristic green stripe: light, soft carcass construction and gummy compound, especially designed for medium speed technical Enduro, ideal in wet slippery conditions.

TECHNICAL ENDURO



PRAKTIKA

Optimal choice for everyday recreational riding in all terrain conditions.

ENDURO

ENDURO



TERRA FORCE-EX SM



TERRA FORCE-EX MH



TERRA FORCE-EX XT



TERRA FORCE-EX HT

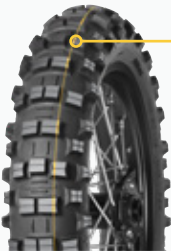


ENDURO HYBRID



STONE KING

TREAD PATTERN	VERSION	STRIPE COLOR	WET ROCKS	GRASS	SAND	CLAY AND MUD	MID-SOFT	LOOSE OVER HARD	STONES / GRAVEL / ROCKS	HARD	SNOW / ICE
											
FRONT											
TERRA FORCE-EX HT*	ICE	□									
ENDURO HYBRID	SUPER	■									
TERRA FORCE-EX MH	SUPER	■									
TERRA FORCE-EX MH	SUPER LIGHT	■									
TERRA FORCE-EX SM	SUPER LIGHT	■									
REAR											
TERRA FORCE-EX HT*	ICE	□									
ENDURO HYBRID	SUPER	■									
TERRA FORCE-EX MH	SUPER	■									
TERRA FORCE-EX SM	SUPER	■									
TERRA FORCE-EX XT	SUPER	■									
TERRA FORCE-EX MH	SUPER LIGHT	■									
ENDURO HYBRID	SUPER LIGHT	■									
STONE KING											
TERRA FORCE-EX SM	SUPER LIGHT	■									
TERRA FORCE-EX XT	SUPER LIGHT	■									
TERRA FORCE-EX MH	SUPER SOFT	■ ■									



SUPER

Identified by the characteristic yellow stripe: medium carcass construction and compound, especially designed for high speed Enduro, ideal in hard dry conditions.

FAST ENDURO



SUPER LIGHT

Identified by the characteristic green stripe: light, soft carcass construction and gummy compound, especially designed for medium speed technical Enduro, ideal in wet slippery conditions.

TECHNICAL ENDURO



SUPER SOFT

Identified by the characteristic double green stripe: light carcass construction with ultra gummy compound, especially designed for low speed extreme Enduro, ideal in wet slippery conditions.

XTREME ENDURO

KEEP ON RIDING

mitas-moto.com     @mitasmoto

Mitas