

Mitas




KEEP ON RIDING

2022

mitas-moto.com

EN · UK · DE · FR · IT · CZ · PL · SI · SE



| |  |  |  |  |  |  |  |  |  |  |  |  |  |
|-------|--|--|--|--|--|--|--|--|--|--|--|--|--|
| EN UK | New sizes | Mud + snow | OEM | Phased out | Tube | Higher loads | Straight line stability | Grip and control at extreme lean angles | Fast and easy steering | Lifetime / durability | Wet conditions | Puncture resistance | Road / off-road |
| DE | Neue dimensionen | Matsc+schnee | Erstausrüstung | Auslaufartikel | Schlauch | Höhere zuladung | Geradeauslaufstabilität | Guter grip und stabilität bei extremer schräglage | Schnelles, leichtes einlenkverhalten | Lebensdauer / haltbarkeit | Nasse bedingungen | Durchdringungsfestigkeit | Straße / gelände |
| FR | Nouvelles tailles | M+S | OEM | Retrait progressif de produits | Chalambre à air | Charges plus élevées | Stabilité en ligne droite | Adhérence et contrôle dans les angles d'inclinaison extrêmes | Conduite rapide et facile | Durée de vie / durabilité | Conditions humides | Résistance à la crevaison | Route / tout-terrain |
| IT | Nuove dimensioni | M+S | OEM | Prodotto fuori produzione | Camera d'aria | Carichi elevati | Traiettoria stabile | Grip e controllo ad angoli di piega estremi | Sterzata facile e veloce | Ciclo di vita/durata | Condizioni di bagnato | Resistenza alla foratura | Road / off-road |
| CZ | Nové velikosti | M+S | OEM | Výroba produktu ukončena | Duše | Vyšší zatížení | Stabilita v přímé jízdě | Grip a kontrola v extrémních úhlech | Rychlé a snadné řízení | Životnost / trvanlivost | Mokré podmínky | Odolnost proti propíchnutí | Vozovka / mimo vozovku |
| PL | Nowe rozmiary | M+S | OEM | Wycofany produkt | Dętka | Większe obciążenia | Stabilność w linii prostej | Przyczepność i sterowanie przy ekstremalnych kątach | Szybkie i łatwe kierowanie | Żywność / trwałość | Warunki mokre | Odporność na przebicie | Droga / teren |
| SI | Nova dimenzija | Blato + sneg (M+S) | Prva vgradnja | V postopku ukinitve | Zračnica | Polna obtežitev | Stabilnost pri vožnji naravnost | Oprijem in nadzor v skrajnem nagibu | Hitro in enostavno menjavanje smeri | Življenjska doba | Vozne lastnosti v mokrem | Odpornost proti preboju | Cesta / teren |
| SE | Nya storlekar | M+S | OEM | Utfasad produkt | Slang | Högre laster | Stabilitet vid rak körning | Grepp och kontroll vid extrem sidolutning | Snabb och lätt styrning | Livstid/hållbarhet | Våta förhållanden | Punkteringstålighet | Väg/terräng |



| | EN UK | DE | FR | IT | CZ | PL | SI | SE |
|------|------------------------------|--|---|---|---|--|---|--|
| I | Inch | Zoll | Pouce | Pollici | Palců | Cale | Inč (palec) | Tum |
| II | Code | Artikel-Nr. | Référence | Codice | Kód | Kod | Šifra artikla | Kod |
| III | Tyre size | Reifendimension | Taille des pneus | Dimensioni pneumatico | Velikost pneumatiky | Rozmiar opony | Dimenzija pnevmatike | Däcksdimension |
| IV | Load index / Speed symbol | Tragfähigkeitsindex / Geschwindigkeitsindex | Indice de charge / symbole de vitesse | Capacità di carico / Indice di velocità | Index nosnosti / symbol rychlosti | Indeks obciążenia / symbol prędkości | Indeks nosilnosti / Hitrostni razred | Lastindex / hastighetssymbol |
| V | Type (TL/TT) | Typ (TL/TT) | Type (TL / TT) | Tubeless/Tube Type (TL/TT) | Typ (TL / TT) | Typ (TL/TT) | Tip (TL/TT) | Typ (TL/TT) |
| VI | Front / Rear | Vorn / Hinten | Avant/Arrière | Anteriore/Posteriore | Přední / Zadní | Przód / tył | Spredaj / Zadaj | Fram/bak |
| VII | Homologation* | Homologation* | Homologation* | Omologazione* | Homologace* | Homologacja* | Homologacija* | Typbesiktning* |
| VIII | Version | Version | Version | Versione | Verze | Wersja | Različica ali verzija | Version |
| IX | Stripe color | Streifenfarbe | Couleur de la bande | Colore Riga | Barva pruhu | Kolor paska | Barvna oznaka | Randfärg |
| X | Tube option 1 | Schlauch-Option 1 | Option chambre à air 1 | Opzione camera d'aria 1 | Možnost duše 1 | Opcja dętki 1 | Zračnica, verzija 1 | Slangalternativ 1 |
| XI | Tube option 2 | Schlauch-Option 2 | Option chambre à air 2 | Opzione camera d'aria 2 | Možnost duše 2 | Opcja dętki 2 | Zračnica, verzija 2 | Slangalternativ 2 |
| F | Front tyre | Vorderreifen | Pneu avant | Pneumatico anteriore | Přední pneumatika | Opona przednia | Sprednja pnevmatika | Framdäck |
| R | Rear tyre | Hinterreifen | Pneu arrière | Pneumatico posteriore | Zadní pneumatika | Opona tylna | Zadnja pnevmatika | Bakdäck |
| TL* | On tube type rim fit a tube. | Schlauchloser Reifen für die Montage auf TL-Felgen. Bei Bedarf ist auch die Verwendung von Luftschläuchen in diesen Reifen auf einer entsprechenden Felge möglich. | TL* Tubeless. On peut utiliser une chambre à air sur des jantes de type tubeless. | TL* Tubeless. Utilizzabile con camera d'aria se montato su cerchio tube type. | TL* Pneumatika bez duše. Můžete použít duši na dušovém ráfku. | TL* Opona bezdętkowa. Możliwe jest użycie dętki w przypadku obręczy z systemem dętkowym. | Uporaba zračnice na TT (tubetype) platiščih | TL* Tubeless [Slanglös]. Du kan använda en slang på en fälg av slangtyp. |

* D = DOT | E = ECE R75 | I = INMETRO | G = GSO conformity | C = CCC



6 – 23



TOURING FORCE



TERRA FORCE-R



E-08
ENDURO



MC 24



E-07+
ENDURO TRAIL



E-07
ENDURO



MC 23
ROCKRIDER



E-10
ENDURO



E-09
ENDURO



C-17
STONEATER



E-02
TOURIST



E-03
TOURIST



E-06



E-05



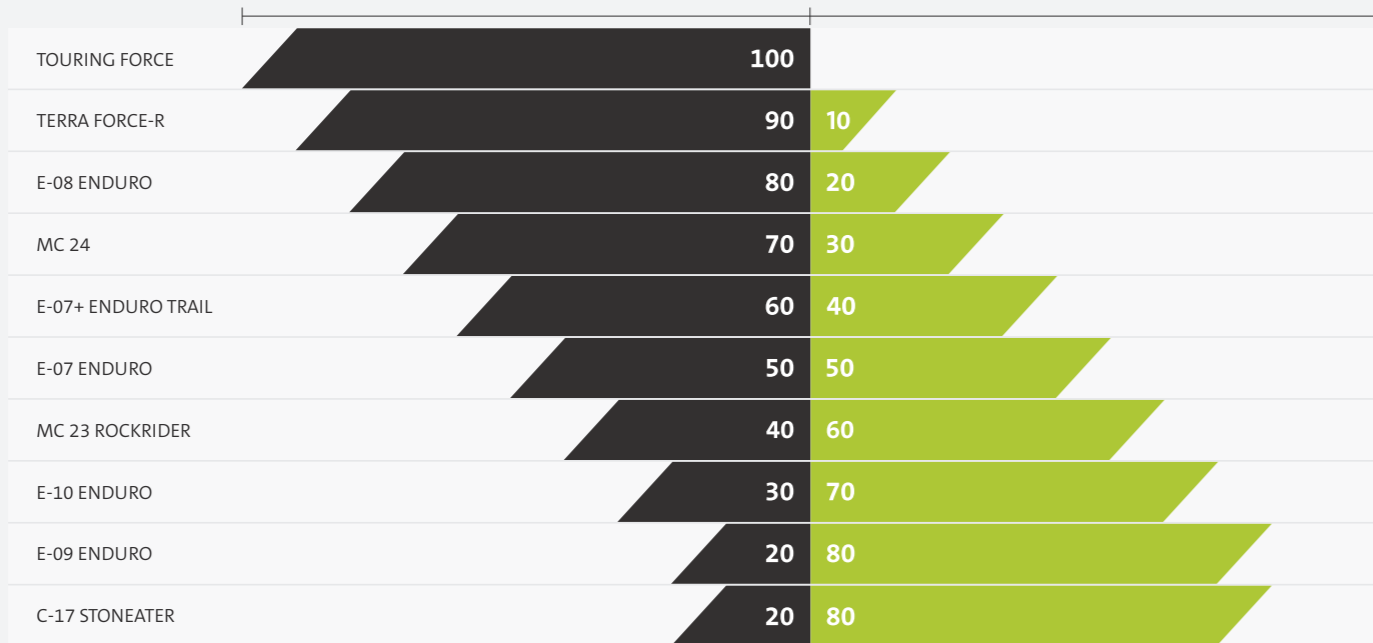
ET-01
ENDURO



24 – 25



26 – 27



DAKAR



Tyre with a stronger carcass and higher puncture resistance. Suitable for higher loads, longer adventure trips and extreme conditions.

Reifen mit einer steiferen Karkasse und höherer Durchdringungsfestigkeit. Geeignet für höhere Belastungen, längere Abenteuerfahrten und extreme Bedingungen.

Pneu avec une carcasse renforcée et une résistance à la crevaison optimisée. Convient lors de chargements plus lourds, de voyages plus longs ou de conditions extrêmes.

Pneumatico con una carcassa più robusta e una maggiore resistenza alle forature. Adatto per carichi più elevati, viaggi avventurosi più lunghi e condizioni estreme.

Pneumatika se silnější kostrou a vyšší odolností proti propíchnutí. Vhodná pro vyšší zatížení, delší dobrodružné výlety a extrémní podmínky.

Opona o mocniejszej osnowie i większej odporności na przebicie. Odpowiednia do większych obciążeń, dłuższych przygodowych wypraw i ekstremalnych warunków.

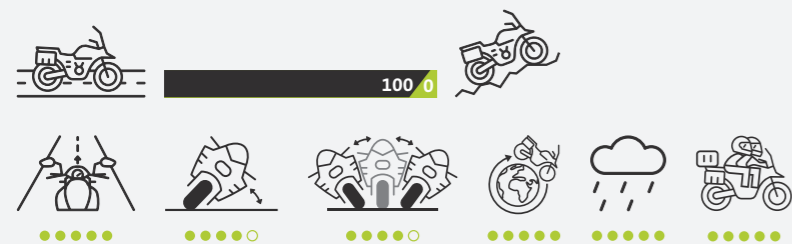
Pnevmatika z močnejšo karkaso in povečano odpornostjo na prebod. Primerna je za večje obremenitve, daljša avanturistična potovanja in ekstremerne pogoje.

Däck med starkare däckstomme och högre punkteringstålighet. Lämpligt för högre laster, längre äventyrsturer och extrema förhållanden.





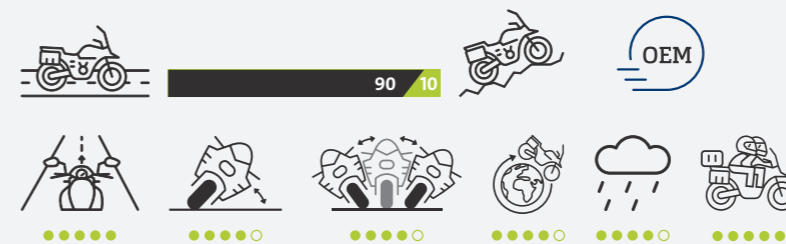
TOURING FORCE



| I | II | III | IV | V | VI | VII |
|----|--------|------------|-------|----|----|------|
| 17 | 608380 | 150/70ZR17 | (69W) | TL | R | ED |
| 17 | 598155 | 150/70R17 | 69V | TL | R | ED |
| | 2022 | 608380 | | | | |
| 17 | 574236 | 170/60ZR17 | (72W) | TL | R | ED I |
| 19 | 608377 | 110/80ZR19 | (59W) | TL | F | ED |
| 19 | 598154 | 110/80R19 | 59V | TL | F | ED |
| | 2022 | 608377 | | | | |
| 19 | 574235 | 120/70ZR19 | (60W) | TL | F | ED I |



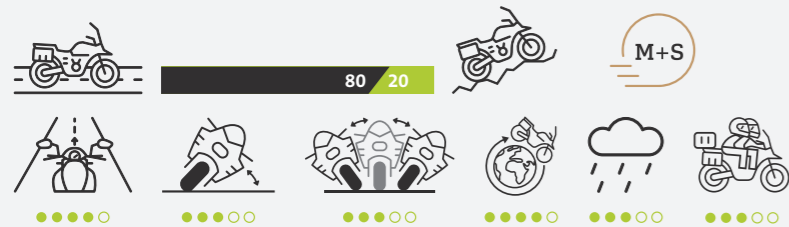
TERRA FORCE-R



| I | II | III | IV | V | VI | VII | X | XI |
|----|--------|------------|-----|-------|----|----------|--------|--------|
| 17 | 586678 | 120/90-17 | 64H | TL* | R | ED I | 576955 | |
| 17 | 586683 | 130/80-17 | 65H | TL* | R | ED I | 576955 | |
| 17 | 567774 | 140/80R17 | 69V | TL | R | ED I | | |
| 17 | 567772 | 150/70R17 | 69V | TL | R | ED I | | |
| 17 | 567778 | 170/60ZR17 | 72W | TL | R | ED I G C | | |
| 18 | 605796 | 150/70R18 | 70V | TL/TT | R | ED I | 576956 | |
| 18 | 597283 | 150/70R18 | 70H | TL/TT | R | ED | 576956 | |
| | 2022 | 605796 | | | | | | |
| 19 | 586684 | 100/90-19 | 57H | TL* | F | ED I | 577001 | |
| 19 | 567770 | 110/80R19 | 59V | TL | F | ED I | | |
| 19 | 567775 | 120/70ZR19 | 60W | TL | F | ED I G C | | |
| 21 | 586689 | 90/90-21 | 54H | TL/TT | F | ED I | 576976 | 577003 |
| 21 | 586691 | 90/90-21 | 54V | TL/TT | F | ED I | 576976 | 577003 |



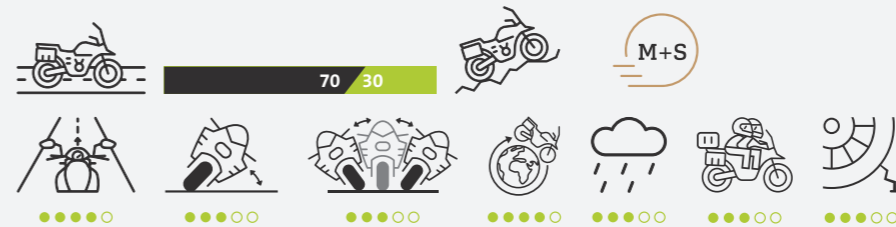
E-08 ENDURO



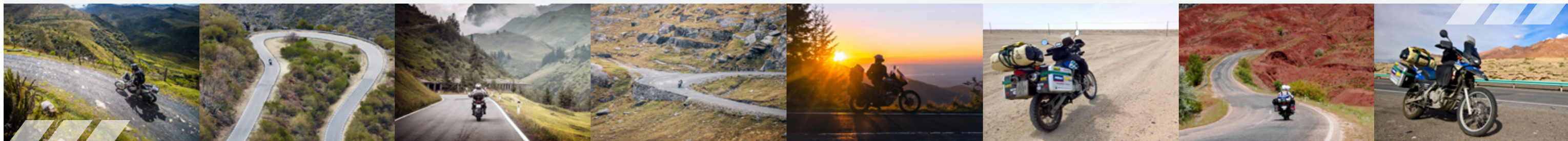
| I | II | III | IV | V | VI | VII | X | XI |
|----|--------|-----------|-----|-----|----|-------|--------|--------|
| 17 | 224151 | 120/90-17 | 64T | TL* | R | E D I | 576955 | |
| 17 | 224125 | 130/80-17 | 65T | TL* | R | E D I | 576955 | |
| 17 | 224152 | 140/80-17 | 69H | TL* | R | E D I | 576955 | |
| 17 | 224161 | 150/70-17 | 69H | TL* | R | E D | 576955 | |
| 18 | 224450 | 4.10-18 | 60P | TT | R | E D I | 576900 | |
| 18 | 224414 | 130/80-18 | 72T | TL* | R | E D I | 576956 | 576999 |
| 19 | 224108 | 100/90-19 | 57H | TL* | F | E D I | 577001 | |
| 19 | 224109 | 110/80-19 | 59H | TL* | F | E D I | 577001 | |
| 21 | 224682 | 2.75-21 | 45P | TT | F | E D I | 576976 | |
| 21 | 224642 | 90/90-21 | 54T | TL* | F | E D I | 576976 | 577003 |



MC-24

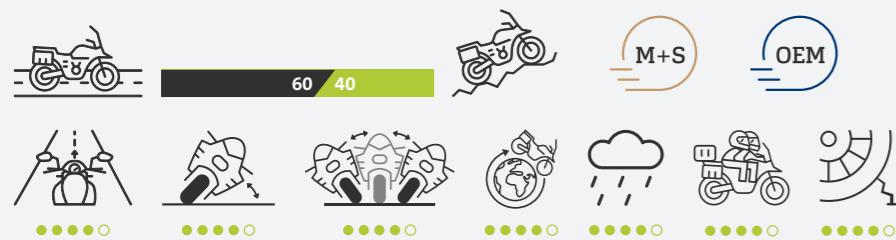


| I | II | III | IV | V | VI | VII | X | XI |
|----|--------|-----------|-----|-----|----|-------|--------|--------|
| 17 | 573403 | 120/90-17 | 64S | TL* | R | E D I | 576955 | |
| 17 | 573393 | 130/80-17 | 65S | TL* | R | E D I | 576955 | |
| 18 | 573400 | 120/80-18 | 62S | TT | R | E D | 576956 | 576900 |
| 19 | 573406 | 100/90-19 | 57S | TL* | F | E D I | 577001 | |
| 21 | 573398 | 90/90-21 | 54S | TT | F | E D I | 577003 | 576976 |





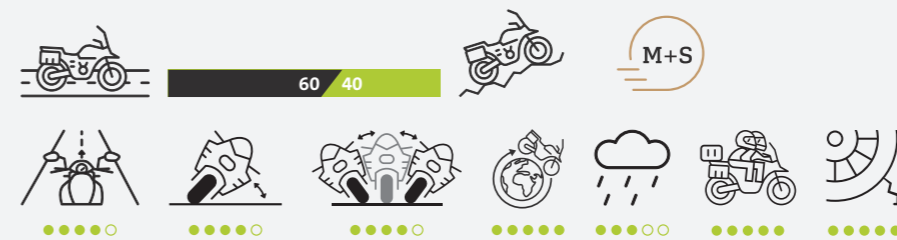
E-07+ ENDURO TRAIL



| I | II | III | IV | V | VI | VII | X | XI |
|----|--------|-----------|-----|-----|----|---------|--------|--------|
| 17 | 224135 | 130/80B17 | 65T | TL* | R | E D I | 576955 | |
| 17 | 224341 | 140/80B17 | 69T | TL* | R | E D | 576955 | |
| 17 | 224059 | 150/70B17 | 69T | TL* | R | E D I | 576955 | |
| 17 | 224031 | 170/60B17 | 72T | TL* | R | E D I G | | |
| 18 | 224400 | 120/80B18 | 62T | TL* | R | E D I | 576956 | |
| 18 | 224417 | 140/80B18 | 70T | TL* | R | E D | 576956 | 576997 |
| 18 | 224061 | 150/70B18 | 70T | TL* | R | E D I | 576956 | |
| 19 | 224444 | 110/80B19 | 59T | TL* | F | E D I | 577001 | |
| 19 | 224143 | 120/70B19 | 60T | TL* | F | E D I | 596772 | |
| 21 | 224654 | 90/90B21 | 54T | TL* | F | E D | 576976 | 577003 |



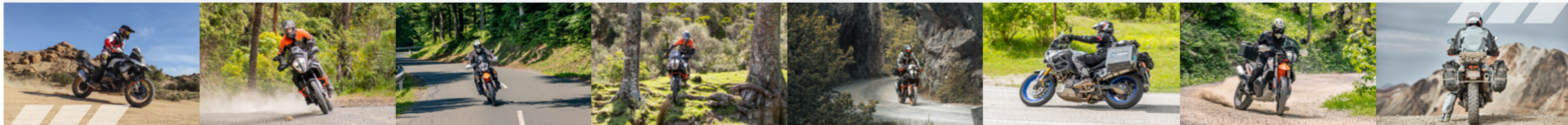
E-07+ ENDURO TRAIL



DAKAR

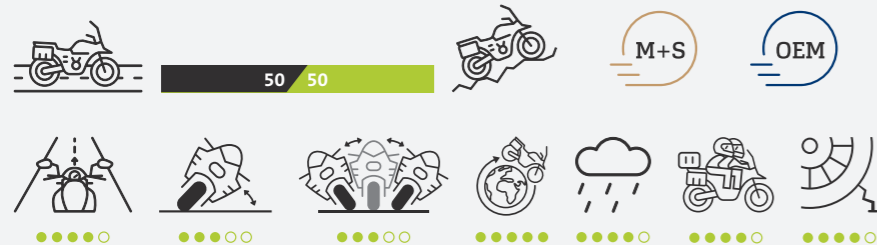


| I | II | III | IV | V | VI | VII | VIII | IX | X | XI |
|----|--------|-----------|-----|-----|----|-------|-------|----|--------|--------|
| 17 | 224342 | 140/80B17 | 69T | TL* | R | E D | DAKAR | ■ | 576955 | |
| 17 | 224060 | 150/70B17 | 69T | TL* | R | E D I | DAKAR | ■ | 576955 | |
| 17 | 224030 | 170/60B17 | 72T | TL* | R | E D I | DAKAR | ■ | | |
| 18 | 224418 | 140/80B18 | 70T | TL* | R | E D | DAKAR | ■ | 576956 | 576997 |
| 18 | 224416 | 150/70B18 | 70T | TL* | R | E D I | DAKAR | ■ | 576956 | |
| 19 | 224448 | 110/80B19 | 59T | TL* | F | E D I | DAKAR | ■ | 577001 | |
| 19 | 224142 | 120/70B19 | 60T | TL* | F | E D I | DAKAR | ■ | 596772 | |
| 21 | 224657 | 90/90B21 | 54T | TL* | F | E D | DAKAR | ■ | 576976 | 577003 |





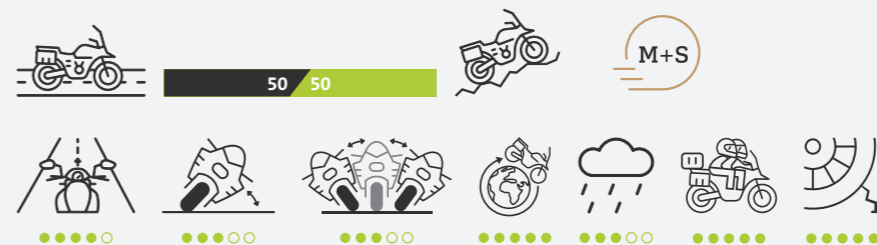
E-07 ENDURO



| I | II | III | IV | V | VI | VII | X | XI |
|----|--------|-----------|-----|-----|----|-------|--------|--------|
| 17 | 224130 | 120/90-17 | 64S | TL* | R | E D I | 576955 | |
| 17 | 224133 | 130/80-17 | 65T | TL* | R | E D I | 576955 | |
| 17 | 224406 | 140/80-17 | 69T | TL* | R | E D I | 576955 | |
| 17 | 224049 | 150/70-17 | 69T | TL* | R | E D I | 576955 | |
| 18 | 224415 | 130/80-18 | 72T | TL* | R | E D I | 576956 | 576999 |
| 18 | 224427 | 140/80-18 | 70T | TL* | R | E D I | 576956 | 576997 |
| 18 | 224404 | 150/70-18 | 70T | TL* | R | E D I | 576956 | |
| 19 | 224547 | 100/90-19 | 57T | TL* | F | E D I | 577001 | |
| 19 | 224439 | 110/80-19 | 59T | TL* | F | E D I | 577001 | |
| 21 | 224636 | 90/90-21 | 54T | TL* | F | E D I | 576976 | 577003 |



E-07 ENDURO



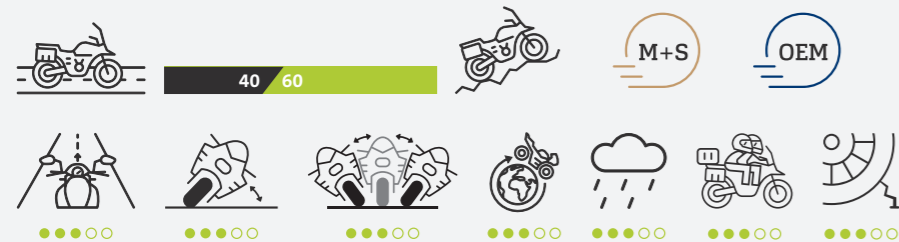
DAKAR

| I | II | III | IV | V | VI | VII | VIII | IX | X | XI |
|----|--------|-----------|-----|-----|----|-------|-------|----|--------|--------|
| 17 | 224408 | 140/80-17 | 69T | TL* | R | E D I | DAKAR | ■ | 576955 | |
| 17 | 224053 | 150/70-17 | 69T | TL* | R | E D I | DAKAR | ■ | 576955 | |
| 18 | 224429 | 140/80-18 | 70T | TL* | R | E D I | DAKAR | ■ | 576956 | 576997 |
| 18 | 224405 | 150/70-18 | 70T | TL* | R | E D I | DAKAR | ■ | 576956 | |
| 19 | 224545 | 100/90-19 | 57T | TL* | F | E D I | DAKAR | ■ | 577001 | |
| 19 | 224445 | 110/80-19 | 59T | TL* | F | E D I | DAKAR | ■ | 577001 | |
| 21 | 224637 | 90/90-21 | 54T | TL* | F | E D I | DAKAR | ■ | 576976 | 577003 |



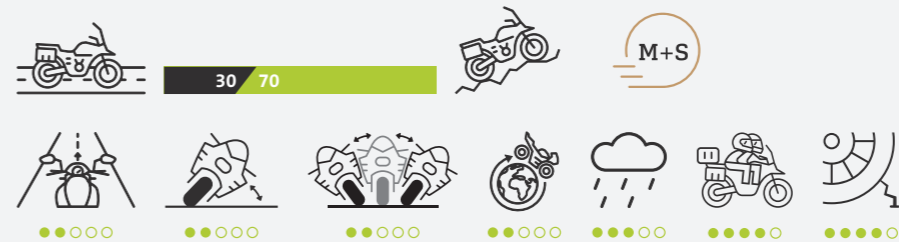


MC-23 ROCKRIDER



| I | II | III | IV | V | VI | VII | X | XI |
|-------------------|--------|-----------|-----|----|----|-------|--------|--------|
| ROCKRIDER | | | | | | | | |
| 18 | 573470 | 120/90-18 | 65R | TT | R | E D I | 596770 | 576999 |
| 18 | 573432 | 140/80-18 | 70R | TT | R | E D I | 596770 | 576997 |
| 21 | 573465 | 90/90-21 | 54R | TT | F | E D I | 574363 | 577003 |
| ROCKYRIDER | | | | | | | | |
| 18 | 573407 | 110/80-18 | 58P | TT | R | E D I | 576900 | |
| 21 | 573427 | 80/90-21 | 48P | TT | F | E D I | 577003 | 576976 |

E-10 ENDURO



| I | II | III | IV | V | VI | VII | X | XI |
|----|--------|-----------|-----|-----|----|---------|--------|--------|
| 17 | 224160 | 140/80B17 | 69T | TL* | R | E D I | 576955 | |
| 17 | 224039 | 150/70B17 | 69T | TL* | R | E D I | 576955 | |
| 17 | 224033 | 170/60B17 | 72Q | TL* | R | E D I G | | |
| 18 | 224423 | 140/80B18 | 70T | TL* | R | E D I | 576956 | 576997 |
| 18 | 224162 | 150/70B18 | 70T | TL* | R | E D I | 576956 | |
| 19 | 224437 | 110/80B19 | 59T | TL* | F | E D I | 577001 | |
| 19 | 224141 | 120/70B19 | 60Q | TL* | F | E D I G | 596772 | |
| 21 | 224655 | 90/90B21 | 54T | TL* | F | E D I | 576976 | 577003 |





E-10 ENDURO



DAKAR



| I | II | III | IV | V | VI | VII | VIII | IX | X | XI |
|----|--------|-----------|-----|-----|----|-------|-------|----|--------|--------|
| 17 | 224424 | 140/80B17 | 69T | TL* | R | E D I | DAKAR | ■ | 576955 | |
| 17 | 224055 | 150/70B17 | 69T | TL* | R | E D I | DAKAR | ■ | 576955 | |
| 18 | 224426 | 140/80B18 | 70T | TL* | R | E D I | DAKAR | ■ | 576956 | 576997 |
| 18 | 224163 | 150/70B18 | 70T | TL* | R | E D I | DAKAR | ■ | 576956 | |
| 19 | 224443 | 110/80B19 | 59T | TL* | F | E D I | DAKAR | ■ | 577001 | |
| 21 | 224656 | 90/90B21 | 54T | TL* | F | E D I | DAKAR | ■ | 576976 | 577003 |



E-09 ENDURO



| I | II | III | IV | V | VI | VII | X | XI |
|----|--------|-----------|-----|-----|----|-------|--------|--------|
| 17 | 224147 | 120/90-17 | 64R | TL* | R | E D I | 576955 | |
| 17 | 224121 | 130/80-17 | 65R | TL* | R | E D I | 576955 | |
| 17 | 224052 | 140/80-17 | 69R | TL* | R | E D I | 576955 | |
| 17 | 224046 | 150/70-17 | 69R | TL* | R | E D I | 576955 | |
| 18 | 224460 | 4.10-18 | 60P | TT | R | E D I | 576900 | |
| 18 | 224432 | 110/80-18 | 58P | TT | R | E D I | 576900 | |
| 18 | 224420 | 130/80-18 | 72R | TL* | R | E D I | 576956 | 576999 |
| 18 | 224159 | 140/80-18 | 70R | TL* | R | E D I | 576956 | 576997 |
| 18 | 224169 | 150/70-18 | 70R | TL* | R | E D I | 576956 | |
| 19 | 224553 | 100/90-19 | 57R | TL* | F | E D I | 577001 | |
| 19 | 224456 | 110/80-19 | 59R | TL* | F | E D I | 577001 | |
| 21 | 224686 | 2.75-21 | 45P | TT | F | E D I | 576976 | |
| 21 | 224648 | 80/90-21 | 48P | TT | F | E D I | 577003 | 576976 |
| 21 | 224645 | 90/90-21 | 54R | TL* | F | E D I | 576976 | 577003 |



E-08 ENDURO

20 80

M+S

●●●●○ ●●○○○ ●●○○○ ●●○○○ ●●○○○ ●●●●● ●●●●●

DAKAR



| I | II | III | IV | V | VI | VII | VIII | IX | X | XI |
|----|--------|-----------|-----|-----|----|-------|-------|----|--------|--------|
| 17 | 224131 | 120/90-17 | 64R | TL* | R | E D | DAKAR | ■ | 576955 | |
| 17 | 224112 | 130/80-17 | 65R | TL* | R | E D I | DAKAR | ■ | 576955 | |
| 17 | 224145 | 140/80-17 | 69R | TL* | R | E D I | DAKAR | ■ | 576955 | |
| 17 | 224048 | 150/70-17 | 69R | TL* | R | E D I | DAKAR | ■ | 576955 | |
| 18 | 224397 | 130/80-18 | 72R | TL* | R | E D I | DAKAR | ■ | 576956 | 576999 |
| 18 | 224176 | 140/80-18 | 70R | TL* | R | E D I | DAKAR | ■ | 576956 | 576997 |
| 18 | 224172 | 150/70-18 | 70R | TL* | R | E D I | DAKAR | ■ | 576956 | |
| 19 | 224555 | 100/90-19 | 57R | TL* | F | E D I | DAKAR | ■ | 577001 | |
| 19 | 224457 | 110/80-19 | 59R | TL* | F | E D I | DAKAR | ■ | 577001 | |
| 21 | 224644 | 90/90-21 | 54R | TL* | F | E D I | DAKAR | ■ | 576976 | 577003 |



C-17 STONEATER

20 80

●●○○○ ●●○○○ ●●○○○ ●●○○○ ●●○○○ ●●○○○ ●●○○○ ●●○○○ ●●○○○ ●●○○○ ●●○○○

E-09 ■ C-17 ■

DAKAR



| I | II | III | IV | V | VI | VII | VIII | IX | X | XI |
|----|--------|----------|-----|----|----|-----|-------|----|--------|--------|
| 21 | 226705 | 90/90-21 | 54R | TT | F | E D | DAKAR | ■ | 574363 | 577003 |

E-02 TOURIST

●●●○○ E-03 E-02



| I | II | III | IV | V | VI | VII | X |
|----|--------|---------|-----|----|----|-----|--------|
| 21 | 223325 | 3.00-21 | 54S | TT | F | E D | 576976 |



E-03 TOURIST

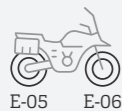


E-03 E-02



| I | II | III | IV | V | VI | VII | X |
|----|--------|---------|-----|----|-----|-----|--------|
| 18 | 223187 | 3.50-18 | 62R | TT | F/R | E D | 576900 |

E-06



E-05 E-06



| I | II | III | IV | V | VI | VII | X |
|----|--------|---------|-----|----|-----|-----|--------|
| 21 | 226049 | 2.75-16 | 46P | TT | F/R | E D | 576891 |

E-05



ET-01 E-05 E-05 E-05



| I | II | III | IV | V | VI | VII | X |
|----|--------|---------|-----|----|-----|-----|--------|
| 19 | 224891 | 4.00-19 | 71P | TT | F/R | E D | 577001 |
| 21 | 223324 | 3.00-21 | 54S | TT | F | E D | 576976 |

ET-01 ENDURO



ET-01 E-05



| I | II | III | IV | V | VI | VII | VII | X | XI |
|----|--------|--------|-----|----|----|-----|--------|--------|--------|
| 18 | 224884 | 4.0-18 | 64M | TL | R | E D | ENDURO | 576999 | 576956 |



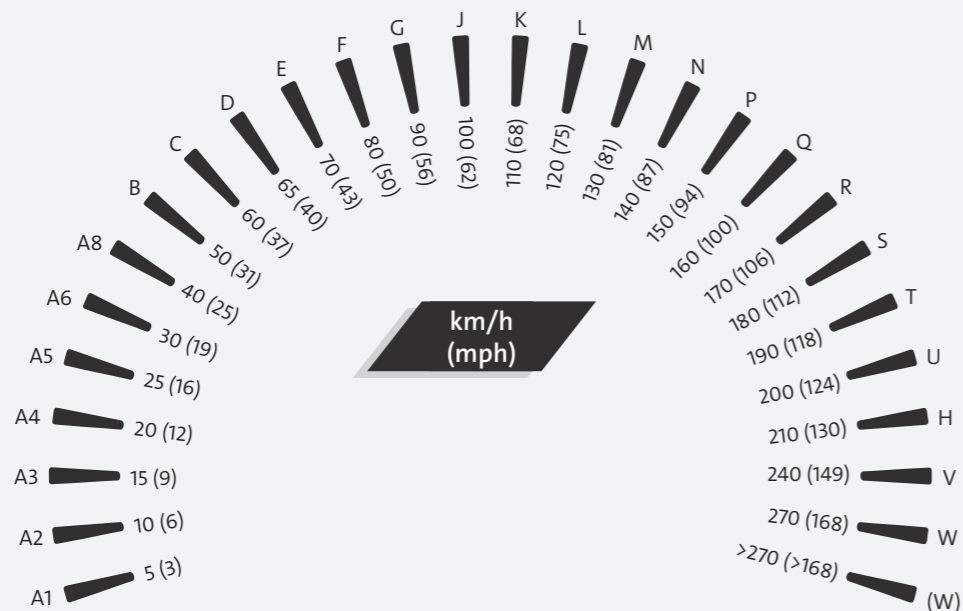
| I | II | III | IV | V | VI |
|------------------------------------|--------|---|-----|--------|----|
| MOPED/MOTORCYCLE | | | | | |
| 18 | 576900 | 3.25,3.50,4.10-18//90/90-//110/80-//100/80-18, 90/100,120/80,110/90,100/100,110/100,120/90,130/80-18 | TR6 | Normal | 50 |
| MOPED/MOTORCYCLE HEAVY DUTY | | | | | |
| 17 | 576955 | 4.00/4.25/4.50/5.00/5.10/6.10//4.25/80-17//110/90-// 120/90-//130/90 - // 120/80-//130/80-//130/70-// 140/80-//140/70-//150/70 - //150/60-//150/80- //140/90-//150/90-//160/60-17 | TR6 | HD | 30 |
| 18 | 576956 | 4.00/4.25/4.50 - // 4.60 -//4.25/85-// 110/90-// 110/100-// 120/80 -// 130/80 - //140/80 - // 150/70 - // 120/90 - // 130/90 - 18 | TR6 | HD | 30 |
| 21 | 576976 | 2.75 /3.00 /3.25 /3.60-21; 80/90-//80/100-//90/90-//100/80-21 | TR6 | HD | 30 |
| OFF-ROAD HEAVY DUTY | | | | | |
| 18 | 576997 | 140/80-18 | TR6 | HD | 30 |
| 18 | 576999 | 120/90,130/80,100/100,110/100-18 (4.00/4.50/4.75/5.00-18) | TR6 | HD | 30 |
| 19 | 577001 | 3.00-19, 3.50-19, 3.75-19, 80/90-19, 90/90-19, 110/90-19, 100/90-19, 110/80-19, 120/90-19, 130/80-19 (130/70-19, 100/90-19, 120/80-19, 70/100-19, 4.00/4.50-19) | TR6 | HD | 30 |
| 21 | 577003 | 80/100-21, 90/90-21 (80/90-21, 90/100-21, 80/100-21, 2.50/2.75/3.00/3.25-21) | TR6 | HD | 30 |
| OFF-ROAD ULTRA HEAVY DUTY | | | | | |
| 18 | 596770 | 120/90,130/80,140/80,100/100,110/100-18 | TR6 | UHD | 10 |
| 19 | 596772 | 120/80,130/70,100/90,110/90-19 | TR6 | UHD | 10 |
| 21 | 574363 | 90/90, 90/100, 80/100-21 | TR6 | UHD | 10 |



| | EN UK | DE | FR | IT | CZ | PL | SI | SE |
|-----|---------------|-----------------------------|--------------------------------|------------------|---------------|-------------------|-----------------|-------------------|
| I | Inch | Zoll | Pouce | Pollici | Palců | Cale | Inč | Tum |
| II | Code | Artikel-Nr. | Référence produit | Codice | Kód | Kod | Šifra artikla | Kod |
| III | Size | Dimension | Taille | Dimensione | Velikost | Rozmiar | Dimenzija | Storlek |
| IV | Valve | Ventil | Valve | Valvola | Ventil | Zawór | Ventil | Ventil |
| V | Thickness | Wandstärke | Épaisseur | Spessore | Tloušťka | Grubość | Debelina | Tjocklek |
| VI | Packing (pcs) | Verpackungseinheit (Anzahl) | Conditionnement (nb de pièces) | Imballaggio (pz) | Balení (kusů) | Opakowanie (szt.) | Pakiranje (kos) | Förpackning (st.) |

TYRE DESIGNATION | REIFENKENNZEICHNUNG | DÉSIGNATION DES PNEUS
INFORMAZIONI SUGLI PNEUMATICI | OZNAČENÍ PNEUMATIK | OZNACZENIA OPON
OZNAKE NA PNEVMATIKI | DÄCKBETECKNINGAR

SPEED SYMBOL | GESCHWINDIGKEITSINDEX | SYMBOLE DE VITESSE | INDICE DI VELOCITÀ
SYMBOL RYCHLOSTNÍHO INDEXU | SYMBOL PRĘDKOŚCI | HITROSTNI RAZRED | HASTIGHETSSYMBOL



TYRE DESIGNATION | REIFENKENNZEICHNUNG | DÉSIGNATION DES PNEUS
INFORMAZIONI SUGLI PNEUMATICI | OZNAČENÍ PNEUMATIK | OZNACZENIA OPON
OZNAKE NA PNEVMATIKI | DÄCKBETECKNINGAR

LOAD INDEX | TRAGFÄHIGKEITSINDEX | INDICE DE CHARGE | INDICE DI CARICO
ZÁTĚŽOVÝ INDEX | INDEKS OBCIĄŻENIA | INDEKS NOSILNOSTI | LASTINDEX

| U | kg | U | kg | U | kg | U | kg | U | kg | U | kg |
|----|------|----|-------|----|-------|----|-------|----|-------|-----|--------|
| 0 | 45.0 | 20 | 80.0 | 40 | 140.0 | 60 | 250.0 | 80 | 450.0 | 100 | 800.0 |
| 1 | 46.2 | 21 | 82.5 | 41 | 145.0 | 61 | 257.0 | 81 | 462.0 | 101 | 825.0 |
| 2 | 47.5 | 22 | 85.0 | 42 | 150.0 | 62 | 265.0 | 82 | 475.0 | 102 | 850.0 |
| 3 | 48.7 | 23 | 87.5 | 43 | 155.0 | 63 | 272.0 | 83 | 487.0 | 103 | 875.0 |
| 4 | 50.0 | 24 | 90.0 | 44 | 160.0 | 64 | 280.0 | 84 | 500.0 | 104 | 900.0 |
| 5 | 51.5 | 25 | 92.5 | 45 | 165.0 | 65 | 290.0 | 85 | 515.0 | 105 | 925.0 |
| 6 | 53.0 | 26 | 95.0 | 46 | 170.0 | 66 | 300.0 | 86 | 530.0 | 106 | 950.0 |
| 7 | 54.5 | 27 | 97.5 | 47 | 175.0 | 67 | 307.0 | 87 | 545.0 | 107 | 975.0 |
| 8 | 56.0 | 28 | 100.0 | 48 | 180.0 | 68 | 315.0 | 88 | 560.0 | 108 | 1000.0 |
| 9 | 58.0 | 29 | 103.0 | 49 | 185.0 | 69 | 325.0 | 89 | 580.0 | 109 | 1030.0 |
| 10 | 60.0 | 30 | 106.0 | 50 | 190.0 | 70 | 335.0 | 90 | 600.0 | 110 | 1060.0 |
| 11 | 61.5 | 31 | 109.0 | 51 | 195.0 | 71 | 345.0 | 91 | 615.0 | 111 | 1090.0 |
| 12 | 63.0 | 32 | 112.0 | 52 | 200.0 | 72 | 355.0 | 92 | 630.0 | 112 | 1120.0 |
| 13 | 65.0 | 33 | 115.0 | 53 | 206.0 | 73 | 365.0 | 93 | 650.0 | 113 | 1150.0 |
| 14 | 67.0 | 34 | 118.0 | 54 | 212.0 | 74 | 375.0 | 94 | 670.0 | 114 | 1180.0 |
| 15 | 69.0 | 35 | 121.0 | 55 | 218.0 | 75 | 387.0 | 95 | 690.0 | 115 | 1215.0 |
| 16 | 71.0 | 36 | 125.0 | 56 | 224.0 | 76 | 400.0 | 96 | 710.0 | 116 | 1250.0 |
| 17 | 73.0 | 37 | 128.0 | 57 | 230.0 | 77 | 412.0 | 97 | 730.0 | 117 | 1285.0 |
| 18 | 75.0 | 38 | 132.0 | 58 | 236.0 | 78 | 425.0 | 98 | 750.0 | 118 | 1320.0 |
| 19 | 77.5 | 39 | 136.0 | 59 | 243.0 | 79 | 437.0 | 99 | 775.0 | 119 | 1360.0 |

Mitas



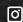
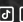
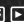
KEEP ON RIDING



Mitas Motorcycle Tyres and Tubes

Trelleborg Wheel Systems Moto, d.o.o.
Škofjeloška cesta 6, 4000 Kranj, Slovenia
Phone: +386 4 206 58 83

mitas-moto.com
info-moto@mitas-tyres.com

    @mitasmoto