



Mitas

KEEP ON RIDING

2022

mitas-moto.com

EN · UK · DE · FR · IT · CZ · PL · SI · SE



								
EN UK	New sizes	Mud + snow	OEM	Phased out	Tube	Race tyre	Straight line stability	Grip and control at extreme lean angles
DE	Neue dimensionen	Matsc+schnee	Erstausrüstung	Auslaufartikel	Schlauch	Rennreifen	Geradeauslaufstabilität	Guter grip und stabilität bei extremer schräglage
FR	Nouvelles tailles	M+S	OEM	Retrait progressif de produits	Chambre à air	Pneu de course	Stabilité en ligne droite	Adhérence et contrôle dans les angles d'inclinaison extrêmes
IT	Nuove dimensioni	M+S	OEM	Prodotto fuori produzione	Camera d'aria	Pneumatico racing	Traiettoria stabile	Grip e controllo ad angoli di piega estremi
CZ	Nové velikosti	M+S	OEM	Výroba produktu ukončena	Duše	Závodní pneumatika	Stabilita v přímé jízdě	Grip a kontrola v extrémních úhlech
PL	Nowe rozmiary	M+S	OEM	Wycofany produkt	Dętka	Opona wyścigowa	Stabilność w linii prostej	Przyczepność i sterowanie przy ekstremalnych kątach
SI	Nova dimenzija	Blato + sneg (M+S)	Prva vgradnja	V postopku ukinitve	Zračnica	Za tekmovanja na stezi	Stabilnost pri vožnji naravnost	Oprijem in nadzor v skrajnem nagibu
SE	Nya storlekar	M+S	OEM	Utfasad produkt	Slang	Tävlingsdäck	Stabilitet vid rak körning	Grepp och kontroll vid extrem sidolutning



						
Fast and easy steering	Lifetime / durability	Racetrack use	Wet conditions	Winter	Studs	Road / off-road
Schnelles, leichtes einlenkverhalten	Lebensdauer / haltbarkeit	Rennstreckeneinsatz	Nasse bedingungen	Winter	Spikes	Straße / gelände
Conduite rapide et facile	Durée de vie / durabilité	Utilisation sur circuit	Conditions humides	Hiver	Clous	Route / tout-terrain
Sterzata facile e veloce	Ciclo di vita/durata	Uso in pista	Condizioni di bagnato	Inverno	Pneumatico chiodato	Road / off-road
Rychlé a snadné řízení	Životnost / trvanlivost	Použití na závodní dráze	Mokré podmínky	Zima	Hroty	Vozovka / mimo vozovku
Szybkie i łatwe kierowanie	Żywotność / trwałość	Użytkowanie torów	Warunki mokre	Zima	Kolce	Droga / teren
Hitro in enostavno menjavanje smeri	Življenjska doba	Uporaba na dirkališču	Vozne lastnosti v mokrem	Zima	Ježevke	Cesta / teren
Snabb och lätt styrning	Livstid/hållbarhet	Användning racerbana	Våta förhållanden	Vinter	Dubbar	Väg/terräng



	EN UK	DE	FR	IT	CZ	PL	SI	SE
I	Inch	Zoll	Pouce	Pollici	Palců	Cale	Inč (palec)	Tum
II	Code	Artikel-Nr.	Référence	Codice	Kód	Kod	Šifra artikla	Kod
III	Tyre size	Reifendimension	Taille des pneus	Dimensioni pneumatico	Velikost pneumatiky	Rozmiar opony	Dimenzija pnevmatike	Däcksdimension
IV	Load index / Speed symbol	Tragfähigkeitsindex / Geschwindigkeitsindex	Indice de charge / symbole de vitesse	Capacità di carico / Indice di velocità	Index nosnosti / symbol rychlosti	Indeks obciążenia / symbol prędkości	Indeks nosilnosti / Hitrostni razred	Lastindex / hastighetssymbol
V	Type (TL/TT)	Typ (TL/TT)	Type (TL / TT)	Tubeless/Tube Type (TL/TT)	Typ (TL / TT)	Typ (TL/TT)	Tip (TL/TT)	Typ (TL/TT)
VI	Front / Rear	Vorn / Hinten	Avant/Arrière	Anteriore/Posteriore	Přední / Zadní	Przód / tył	Spredaj / Zadaaj	Fram/bak
VII	Homologation*	Homologation*	Homologation*	Omologazione*	Homologace*	Homologacja*	Homologacija*	Typbesiktning*
VIII	Version	Version	Version	Versione	Verze	Wersja	Različica ali verzija	Version
IX	Stripe color	Streifenfarbe	Couleur de la bande	Colore Riga	Barva pruhu	Kolor paska	Barvna oznaka	Randfärg
X	Tube option 1	Schlauch-Option 1	Option chambre à air 1	Opzione camera d'aria 1	Možnost duše 1	Opcja dętki 1	Zračnica, verzija 1	Slangalternativ 1
XI	Tube option 2	Schlauch-Option 2	Option chambre à air 2	Opzione camera d'aria 2	Možnost duše 2	Opcja dętki 2	Zračnica, verzija 2	Slangalternativ 2
F	Front tyre	Vorderreifen	Pneu avant	Pneumatico anteriore	Přední pneumatika	Opona przednia	Sprednja pnevmatika	Framdäck
R	Rear tyre	Hinterreifen	Pneu arrière	Pneumatico posteriore	Zadní pneumatika	Opona tylna	Zadnja pnevmatika	Bakdäck
TL*	On tube type rim fit a tube.	Schlauchloser Reifen für die Montage auf TL-Felgen. Bei Bedarf ist auch die Verwendung von Luftschläuchen in diesen Reifen auf einer entsprechenden Felge möglich.	TL* Tubeless. On peut utiliser une chambre à air sur des jantes de type tubeless.	TL* Tubeless. Utilizzabile con camera d'aria se montato su cerchio tube type.	TL* Pneumatika bez duše. Můžete použít duši na dušovém ráfku.	TL* Opona bezdętkowa. Możliwe jest użycie dętki w przypadku obręczy z systemem dętkowym.	Uporaba zračnice na TT (tubetype) platiščih	TL* Tubeless [Slanglös]. Du kan använda en slang på en fälg av slangtyp.

* D = DOT | E = ECE R75 | I = INMETRO | G = GSO conformity | C = CCC



6 – 25



TOURING FORCE-SC



MC 20
MONSUM



MC 17



MC 19



MC 18



MC 6



MC 25
BOGART



MC 29
SPORTY 3+



MC 16



MC 13



MC 26
CAPRI



MC 28
DIAMONDS



MC 38
MAX SCOOT



MC 35
S-RACER 2.0



MC 20
MONSUM



MC 34



MC 32
WIN SCOOT



B 13



B 14



S-03



S-04



MC 22
ELEGANCE



MC 12



MC 5



S-05



B 61



26 – 29



MC 51
MEDITERRA



MC 11



MC 2



B 8



B 7



B 4



B 3



M-02



30 – 31



TOURING FORCE-SC



I	II	III	IV	V	VI	VII	VIII	X	XI
10	598262	3.50-10	51P	F/R	TL*	E D I		576867	
10	598190	90/90-10	50J	F/R	TL*	E D		576867	
10	598192	100/80-10	53L	F/R	TL*	E D		576867	
10	598194	100/90-10	61J	F/R	TL*	E D	REINF	576876	





TOURING FORCE-SC

I	II	III	IV	V	VI	VII	VIII	X	XI
10	598263	120/90-10	66L	F/R	TL*	E D		576876	
10	598264	130/90-10	61L	R	TL*	E D			
10	598195	130/70-10	59P	R	TL*	E D	REINF		
12	598277	110/80-12	61L	F/R	TL*	E D			
12	598278	110/90-12	64P	F	TL*	E D I		576885	576982
12	598265	110/70-12	47P	F/R	TL*	E D			
12	598129	110/70-12	56M	F/R	TL*	E D			
12	592158	120/70-12	51L	F/R	TL*	E D			
12	592169	120/70-12	51S	F/R	TL*	E D			
12	592141	120/70-12	58P	F/R	TL*	E D	REINF		
12	592542	130/70-12	56L	F/R	TL*	E D			
12	592533	130/70-12	64P	F/R	TL*	E D	REINF		
12	598196	140/70-12	65P	R	TL*	E D	REINF		
13	605979	110/70-13	48S	F/R	TL*	E D			
13	598197	110/90-13	56P	F	TL*	E D I			
13	598280	120/70-13	53L	F	TL*	E D			
13	598282	120/70-13	53P	F	TL*	E D			
13	598198	130/60-13	53J	F/R	TL*	E D			
13	598199	130/60-13	60P	F/R	TL*	E D	REINF		
13	598200	130/70-13	63P	R	TL*	E D	REINF		
13	598223	140/60-13	57L	R	TL*	E D			
13	598224	140/60-13	63P	R	TL*	E D	REINF		
13	595134	150/70-13	64S	R	TL*	E D			



TOURING FORCE-SC



I	II	III	IV	V	VI	VII	VIII	X	XI
14	598283	80/80-14	53L	F/R	TL*	E D	REINF		
14	598225	80/90-14	40P	F/R	TL*	E D I			
14	595135	90/90-14	46P	F/R	TL*	E D I			
14	598284	100/70-14	53L	F/R	TL*	E D	REINF		
14	595136	100/90-14	57P	F/R	TL*	E D I	REINF		
14	598285	110/80-14	59P	R	TL*	E D I			
14	595138	120/80-14	58S	F/R	TL*	E D I			
14	598227	120/70-14	55L	F/R	TL*	E D			
14	598228	120/70-14	55P	F/R	TL*	E D			
14	598233	120/70-14	55S	F/R	TL*	E D			
14	595131	140/60-14	64P	R	TL*	E D	REINF		
14	595132	140/60-14	64S	R	TL*	E D	REINF		
14	592514	140/70-14	68P	R	TL*	E D	REINF		
14	592527	140/70-14	68S	R	TL*	E D	REINF		
14	598234	150/70-14	66S	R	TL*	E D			
15	598235	130/80-15	63P	R	TL*	E D I			
15	595133	120/70-15	56P	F	TL*	E D			
15	595137	120/70-15	56S	F	TL*	E D			
15	598286	140/70-15	69P	R	TL*	E D	REINF		
16	598287	80/80-16	45P	F/R	TL*	E D I	REINF	576892	576893



TOURING FORCE-SC

I	II	III	IV	V	VI	VII	VIII	X	XI
16	598236	80/90-16	48P	F/R	TL*	E D I	REINF	576893	
16	598288	90/80-16	51P	F/R	TL*	E D I	REINF	576892	576893
16	595139	100/80-16	50P	F/R	TL*	E D I			
16	595141	120/80-16	60P	R	TL*	E D I			
16	592156	110/70-16	52P	F/R	TL*	E D			
16	592170	110/70-16	52S	F/R	TL*	E D			
16	595143	130/70-16	61P	R	TL*	E D			
16	598289	120/70-16	57P	F	TL*	E D			
16	605828	120/70-16	57S	F	TL*	E D			
16	595144	140/70-16	65P	R	TL*	E D			
16	595145	140/70-16	65S	R	TL*	E D			





MC-20 MONSUM



I	II	III	IV	V	VI	VII	VIII	X
10	573157	3.50-10	51P	TL*	F/R	E D I		576867
10	577616	3.50-10	51P	TL*	F/R	E D I	HARD	576867
10	573158	3.50-10	51P	TL*	F/R	E D	WHITE WALL	576867
10	573144	120/90-10	57L	TL*	F/R	E D		576876
10	573155	130/90-10	61L	TL*	F/R	E D		
10	573160	120/70-10	54L	TL*	F/R	E D I		
10	573161	120/70-10	54L	TL*	F/R	E D	WHITE WALL	
11	573166	110/70-11	45L	TL*	F/R	E D		
11	573167	110/70-11	45L	TL*	F/R	E D	WHITE WALL	
11	573169	120/70-11	56L	TL*	F/R	E D		
11	576884	120/70-11	56L	TL*	F/R	E D	WHITE WALL	
12	586712	90/90-12	54J	TL*	F/R	E D		576987
12	573171	120/70-12	58P	TL*	F/R	E D		
12	573173	120/70-12	58P	TL*	F/R	E D	WHITE WALL	
12	573175	130/70-12	62P	TL*	F/R	E D		
12	573176	130/70-12	62P	TL*	F/R	E D	WHITE WALL	
13	573178	130/60-13	60P	TL*	F/R	E D		
		→ 2021	598199	7				



MC-17



50 50



I	II	III	IV	V	VI	VII	X
10	573060	120/90-10	56J	TL*	F/R	E D	576876
10	573061	130/90-10	61J	TL*	F/R	E D	
10	573063	150/80-10	65 L	TL*	F/R	E D	

MC-19



60 40



I	II	III	IV	V	VI	VII
12	573064	120/80-12	55J	TL*	F/R	E D
12	573068	130/80-12	60J	TL*	F/R	E D



MC-18



I	II	III	IV	V	VI	VII	VIII	X
10	573926	3.50-10	51P	TL	F/R	E D		576867
	→	598262						
10	573953	3.50-10	51P	TL*	F/R	E D	WHITE WALL	576867
	→	573158						

MC-6



I	II	III	IV	V	VI	VII	X
10	573925	110/80-10	61J	TL/TT	F/R	E D	576876
10	573896	100/80-10	56J	TL/TT	F/R	E D	576867
	→	598192					
10	573910	100/90-10	61J	TL/TT	F/R	E D	576876
	→	598194					



MC-25 BOGART



●●●○○



●●●○○



●●●○○



●●●○○



●●●○○



I	II	III	IV	V	VI	VII
10	573928	130/70-10	59P	TL*	R	E D
		598195				
12	573934	120/70-12	58P	TL*	F/R	E D
		592141				

MC-29 SPORTY 3+



●●●○○



●●●○○



●●●○○



●●●○○



●●●○○



I	II	III	IV	V	VI	VII	X
10	573071	120/90-10	57L	TL*	F/R	E D	576876
		598263					
10	573072	130/90-10	61L	TL*	R	E D	
		598264					
10	573078	130-60-13	60P	TL*	F/R	E D	
		598199					



MC-16



●●●○○



●●●○○



●●●○○



●●●○○



●●●○○



I	II	III	IV	V	VI	VII	X	XI
12	573199	110/70-12	47P	TL*	F/R	E D		
	→	598265						
12	573191	110/80-12	61L	TL*	F/R	E D		
	→	598277						
12	573180	110/90-12	64P	TL*	F	E D	576885	576982
	→	598278						
12	573204	120/70-12	58P	TL*	F/R	E D		
	→	592141						
12	573222	140/70-12	65P	TL*	R	E D		
	→	598196						
13	573220	120/70-13	53L	TL*	F	E D		
	→	598280						
13	573225	120/70-13	60P	TL*	F	E D		
	→	598282						
13	573221	130/60-13	53J	TL*	F/R	E D		
	→	598198						
13	573223	130/60-13	60P	TL*	F/R	E D		
	→	598199						
13	573224	140/60-13	57L	TL*	R	E D		
	→	598223						



MC-13



●●●○○



●●●○○



●●●○○



●●●○○



●●●○○



I	II	III	IV	V	VI	VII	X
10	573884	90/90-10	50J	TL/TT	F/R	E D	576867
	→ 598190						

MC-26 CAPRI



●●●○○



●●●○○



●●●○○



●●●○○



●●●○○



I	II	III	IV	V	VI	VII	X	XI
14	573936	80/80-14	53L	TL/TT	F/R	E D		
	→ 598283							
14	573937	100/70-14	53L	TL/TT	F/R	E D		
	→ 598284							
14	573938	110/80-14	59M	TL/TT	R	E D	576892	576893
	→ 598285							
16	573869	80/80-16	46M	TL/TT	F/R	E D		
	→ 598287							
16	573870	90/80-16	52M	TL/TT	F/R	E D		
	→ 598288							



MC-28 DIAMONDS



I	II	III	IV	V	VI	VII
13	573321	140/60-13	57L	TL*	R	ED
	→	598223				
13	573288	110/90-13	56P	TL	F	ED
	→	598197				
13	573291	130/70-13	63P	TL*	R	ED
	→	598200				
14	573326	120/70-14	55L	TL*	F/R	ED
	→	598227				
14	573328	120/70-14	55P	TL*	F/R	ED
	→	598228				
14	573329	120/70-14	55S	TL*	F/R	ED
	→	598233				
14	573351	150/70-14	66S	TL*	R	ED
	→	598234				
15	573334	130/80-15	63P	TL*	R	ED
	→	598235				
15	573338	120/70-15	56S	TL*	F	ED
	→	595137				
15	573296	140/70-15	69P	TL*	R	ED
	→	598286				
16	573305	130/70-16	61P	TL*	R	ED
	→	595143				
16	573309	120/70-16	57P	TL*	F	ED
	→	598289				



MC-98 MAX SCOOT



●●●○○



●●●○○



●●●○○



●●●○○



●●●○○



I	II	III	IV	V	VI	VII	X
14	573235	90/90-14	46P	TL*	F/R	E D	
	2022	595135					
14	573237	100/90-14	57P	TL*	F/R	E D	
	2022	595136					
14	573243	140/60-14	64S	TL*	R	E D	
	2022	595132					
14	573246	140/70-14	68S	TL*	R	E D	
	2022	592527					
16	574186	80/90-16	45P	TL*	F/R	E D	576893
	2022	598236					
16	573252	120/80-16	60P	TL*	R	E D	
	2022	595141					
16	573256	140/70-16	65P	TL*	R	E D	
	2022	595144					





MC-95 S-RACER 2.0



●●●○○



●●●●●



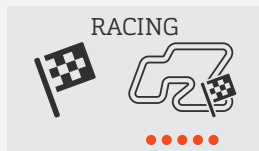
●●●●●



●●●○○



●●●○○



●●●●●



I	II	III	IV	V	VI	VII	VIII	X
10	574252	3.50-10	51P	TL*	F/R	E D C		576867
10	574253	100/90-10	56P	TL*	F/R	E D		576876
	→	598194						
12	574249	100/90-12	49P	TL*	F/R	E D C		576883
12	574251	120/80-12	55P	TL*	F/R	E D		
RACING								
10	574280	3.50-10	51P	TL*	F/R	E D	SUPER SOFT	576867
	→	574285						
12	574254	100/90-12	49P	TL*	F/R	E D	SUPER SOFT	576883
12	574272	120/80-12	55P	TL*	F/R	E D	SUPER SOFT	
10	574285	3.50-10	51P	TL*	F/R	E D	SOFT	576867
12	574283	100/90-12	49P	TL*	F/R	E D	SOFT	576883
12	574284	120/80-12	55P	TL*	F/R	E D	SOFT	
10	574293	3.50-10	51P	TL*	F/R	E D	MEDIUM	576867
10	574295	100/90-10	56P	TL*	F/R	E D	MEDIUM	576876
12	574287	100/90-12	49P	TL*	F/R	E D	MEDIUM	576883
12	574291	120/80-12	55P	TL*	F/R	E D	MEDIUM	

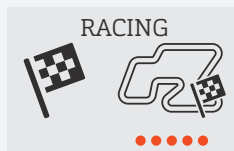


MC-20 MONSUM



I	II	III	IV	V	VI	VII	VIII	IX	X
RACING									
10	596717	3.50-10	51P	TL*	F/R	NHS	RACING RAIN	■	576867
12	596779	100/90-12	49P	TL*	F/R	NHS	RACING RAIN	■	576883
12	596785	120/80-12	55P	TL*	F/R	NHS	RACING RAIN	■	

MC-34



I	II	III	IV	V	VI	VII	VIII	X	
10	573083	90/90-10	50P	TL*	F/R	E D		576867	
10	574245	100/90-10	56P	TL*	F/R	E D		576876	
	→ 2022	574285	18						
12	573094	110/70-12	53P	TL*	F/R	E D C			
12	573096	120/70-12	51P	TL*	F/R	E D C			
12	574248	130/70-12	62P	TL*	F/R	E D C			
RACING									
10	573084	90/90-10	50P	TL*	F/R	E D	SUPER SOFT	576867	
10	574809	100/90-10	56P	TL*	F/R	E D	SUPER SOFT	576876	
12	573095	110/70-12	53P	TL*	F/R	E D	SUPER SOFT		
12	573099	120/70-12	51P	TL*	F/R	E D	SUPER SOFT		
12	574814	130/70-12	62P	TL*	F/R	E D	SUPER SOFT		



MC-82 WIN SCOOT

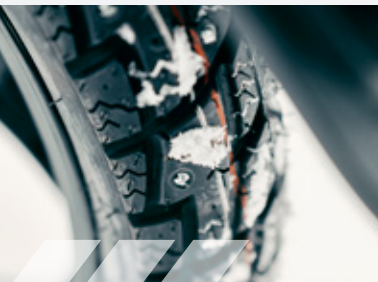


I	II	III	IV	V	VI	VII	X
10	573110	3.50-10	51P	TL*	F/R	E D	576867
10	573109	100/80-10	53P	TL*	F/R	E D	576867
10	573114	120/70-10	54P	TL/TT	F/R	E D	
10	573113	120/90-10	57L	TL*	F/R	E D	576876
10	573111	130/90-10	61L	TL*	F/R	E D	
11	573115	110/70-11	45P	TL*	F/R	E D	
12	573121	120/70-12	58P	TL*	F/R	E D	
12	573120	130/70-12	62P	TL*	F/R	E D	
12	577155	130/70-12	62P	TL*	F/R	E D	
13	573116	130/60-13	60P	TL*	F/R	E D	
14	573101	80/80-14	53L	TL/TT	F/R	E D	
14	573102	100/70-14	53L	TL/TT	F/R	E D	
14	573122	110/80-14	59P	TL/TT	F/R	E D	
16	573129	90/80-16	52P	TL/TT	F/R	E D	
16	573103	100/80-16	50P	TL*	F/R	E D	
16	573104	120/80-16	60P	TL*	F/R	E D	
16	573107	110/70-16	52P	TL*	F/R	E D	



MC-92 WIN SCOOT

I	II	III	IV	V	VI	VII	VIII	X
STUDS								
10	608549	3.50-10	51P	TL*	F/R	E D	STUDS	576867
10	608550	100/80-10	53P	TL*	F/R	E D	STUDS	576867
10	608551	120/70-10	54P	TL/TT	F/R	E D	STUDS	
10	608552	120/90-10	57L	TL*	F/R	E D	STUDS	576876
10	608553	130/90-10	61L	TL*	F/R	E D	STUDS	
11	608555	110/70-11	45P	TL*	F/R	E D	STUDS	
12	608556	120/70-12	58P	TL*	F/R	E D	STUDS	
12	608557	130/70-12	62P	TL*	F/R	E D	STUDS	
13	608558	130/60-13	60P	TL*	F/R	E D	STUDS	
14	608559	80/80-14	53L	TL/TT	F/R	E D	STUDS	
14	608560	100/70-14	53L	TL/TT	F/R	E D	STUDS	
14	608561	110/80-14	59P	TL/TT	F/R	E D	STUDS	
16	607752	90/80-16	52P	TL/TT	F/R	E D	STUDS	
16	608541	100/80-16	50P	TL*	F/R	E D	STUDS	
16	608562	120/80-16	60P	TL*	F/R	E D	STUDS	
16	608563	110/70-16	52P	TL*	F/R	E D	STUDS	





B-13



I	II	III	IV	V	VI	VII	VIII	X
8	573368	3.50-8	46J	TT	F/R	E D	4PR	576866
8	573379	3.50-8	46J	TT	F/R	E D	WHITEWALL - 4PR	576866
8	573354	4.00-8C	71J	TT	F/R	E D	6PR	576866
8	573356	4.00-8C	66N	TL/TT	F/R	E D	4PR	576866
8	573359	4.00-8C	66J	TT	F/R	E D	WHITEWALL - 4PR	576866

B-14



I	II	III	IV	V	VI	VII	VIII	X
10	573390	3.50-10	59J	TT	F/R	E D		576867
10	573392	3.50-10	51J	TT	F/R	E D	WHITE WALL	576867
10	573384	4.00-10C	69J	TT	F/R	E D	4PR	576876
10	573385	4.00-10C	74J	TT	F/R	E D	6PR	576876



S-03



I	II	III	IV	V	VI	VII	X
8	571261	4.00-8	63J	TT	F/R	E D	576866

S-04



I	II	III	IV	V	VI	VII	X
8	571247	4.00-8C	66L	TT	F/R	E D	576866



MC-22 ELEGANCE



●●●○○



I	II	III	IV	V	VI	VII	VIII	X
10	573905	100/80-10	53L	TL*	F/R	E D		576867
	2022	598192						
10	573955	100/80-10	53L	TL*	F/R	E D	WHITE WALL	576867
10	573927	120/70-10	54L	TL*	F/R	E D I		
10	573961	120/70-10	54L	TL*	F/R	E D	WHITE WALL	

MC-12



●●●○○



I	II	III	IV	V	VI	VII	VIII	X
10	573877	3.00-10	42J	TL/TT	F/R	E D		576867
10	573949	3.00-10	42J	TL/TT	F/R	E D	WHITE WALL	576867



MC-6



●●●○○



I	II	III	IV	V	VI	VII	X
12	573930	3.00-12	47J	TT	F/R	E D	576883

S-06



●●●○○



I	II	III	IV	V	VI	VII	X
12	222051	3.25-12	55J	TT	F/R	E D	576883
12	222071	3.50-12	64J	TT	F/R	E D	576883

B-61



●●●○○



I	II	III	IV	V	VI	VII	VIII
10	573387	125/90-10	76N	TL*	F/R	E D	WHITEWALL - 6PR



MC-51 MEDITERRA



I	II	III	IV	V	VI	VII	X
17	572963	2.50-17	43P	TL*	F/R	E D	576896
17	572964	2.75-17	47P	TL*	F/R	E D	576896

MC-11



I	II	III	IV	V	VI	VII	VIII	X
17	572974	2-17 (2.00-17)	31J	TT	F/R	E D		576979
17	572976	2 1/4-17 (2.25-17)	39J	TT	F/R	E D		576894
17	572969	2 1/4-17 (2.25-17)	39J	TT	F/R	E D	WHITE WALL	576894
17	572975	2 1/2-17 (2.50-17)	43J	TL/TT	F/R	E D		576896
17	603094	2 1/2-17 (2.50-17)	43J	TL/TT	F/R	E D	WHITE WALL	576896
17	572973	2 3/4-17 (2.75-17)	47J	TL/TT	F/R	E D		576896
17	603074	2 3/4-17 (2.75-17)	47J	TL/TT	F/R	E D	WHITE WALL	576896
18	572965	2.50-18	45P	TT	F/R	E D		576897



MC-2



●●●○○



●●●○○



●●●○○



●●●○○



●●●○○



I	II	III	IV	V	VI	VII	VIII	X
16	572949	2 1/4-16 (2.25-16)	38J	TT	F/R	E D		576890
16	572950	2 1/2-16 (2.50-16)	42J	TL/TT	F/R	E D		576891
16	572946	2 1/2-16 (2.50-16)	42J	TL/TT	F/R	E D	WHITE WALL	576891
16	572952	2 3/4-16 (2.75-16)	46J	TL/TT	F/R	E D		576891
16	572948	2 3/4-16 (2.75-16)	46J	TL/TT	F/R	E D	WHITE WALL	576891
16	572947	3 1/4-16 (3.25-16)	54J	TL/TT	F/R	E D		576893

B-8



●●●○○



I	II	III	IV	V	VI	VII	VIII	X
16	572901	2 1/4-16 (2.25-16)	38J	TT	F/R	E D		576890
16	572903	2 1/4-16 (2.25-16)	38J	TT	F/R	E D	WHITE WALL	576890
16	572916	2 1/2-16 (2.50-16)	42J	TT	F/R	E D		576891



B-7



I	II	III	IV	V	VI	VII	VIII	X
17	572938	2 3/4-17 (2.75-17)	47J	TL/TT	F/R	E D		576896
17	572937	2 3/4-17 (2.75-17)	47J	TL/TT	F/R	E D	WHITE WALL	576896

B-4



I	II	III	IV	V	VI	VII	VIII	X
17	572943	2 1/4-17 (2.25-17)	39J	TT	F/R	E D		576894
17	600921	2 1/4-17 (2.25-17)	39J	TT	F/R	E D	WHITE WALL	576894
17	572944	2 1/2-17 (2.50-17)	43J	TT	F/R	E D		576896
18	572942	2 1/4-18 (2.25-18)	42J	TT	F/R	E D		576897
18	572940	2 1/4-18 (2.25-18)	42J	TT	F/R	E D	WHITE WALL	576897



B-3



I	II	III	IV	V	VI	VII	X
18	572941	2 1/2-18 (2.50-18)	43J	TT	F/R	E D	576897

M-02



I	II	III	IV	V	VI	VII	X
19	570749	2-19 (2.00-19)	24B	TT	F/R	E D	576949
19	570751	2 1/4-19 (2.25-19)	30B	TT	F/R	E D	576949



I	II	III	IV	V	VI
SCOOTER					
8	576866	3.50/4.00 - 8	JS 87 90/90	Normal	50
10	576867	2.50/3.00/3.50-10, 90/90-10	JS 87 90/90	Normal	50
10	576876	4.00-10, 100/90-//110/90-10	JS 87N 90/90	Normal	50
12	576883	2.50/3.00 - 12, 3.25,3.50-12, 100/90-12	JS 87 90/90	Normal	50
12	576885	4.00/4.50 - 12	JS 87 90/90	Normal	50
12	576982	4.00/4.50 - 12	JS 87 45/90	Normal	50
MOPED					
16	576890	2 1/4-16, 2.25-16, 60/100-16	TR4	Normal	50
16	576891	2 1/2 2 3/4-16, 2.50/2.75-16	TR4	Normal	50
16	576893	3.00/3.25-16, 3.50-16, 80/90,90/90,90/100-16	TR6	Normal	50
17	576979	2.00/2.25/2.50-16/17	TR4	Normal	50
17	576894	2 / 2 1/4 -17, 2.00/2.25-17 60/100-17	TR4	Normal	50
17	576896	2 1/2 2 3/4-17, 2.50/2.75-17	TR6	Normal	50
18	576897	2 1/4 /2 1/2-18, 2.25/2.50-18	TR4	Normal	50
MOPED/MOTORCYCLE					
12	576987	80/100-12	TR4	Normal	50
16	576892	3.00/3.25-16,110/90-16	TR6	Normal	50
23	570049	2,75/3,00-23	TR4	Normal	40



TR 4



TR 6



JS87
TR87
90/90



	EN UK	DE	FR	IT	CZ	PL	SI	SE
I	Inch	Zoll	Pouce	Pollici	Palců	Cale	Inč	Tum
II	Code	Artikel-Nr.	Référence produit	Codice	Kód	Kod	Šifra artikla	Kod
III	Size	Dimension	Taille	Dimensione	Velikost	Rozmiar	Dimenzija	Storlek
IV	Valve	Ventil	Valve	Valvola	Ventil	Zawór	Ventil	Ventil
V	Thickness	Wandstärke	Épaisseur	Spessore	Tloušťka	Grubość	Debelina	Tjocklek
VI	Packing (pcs)	Verpackungseinheit (Anzahl)	Conditionnement (nb de pièces)	Imballaggio (pz)	Balení (kusů)	Opakowanie (szt.)	Pakiranje (kos)	Förpackning (st.)

Mitas






KEEP ON RIDING



Mitas Motorcycle Tyres and Tubes

Trelleborg Wheel Systems Moto, d.o.o.
Škofjeloška cesta 6, 4000 Kranj, Slovenia
Phone: +386 4 206 58 83

mitas-moto.com
info-moto@mitas-tyres.com

    @mitasmoto